

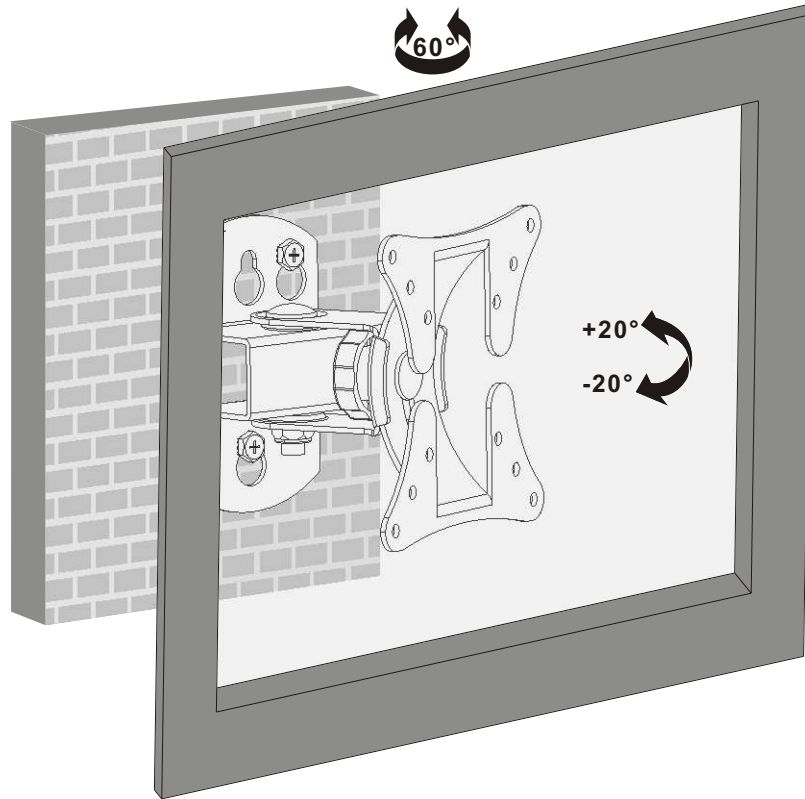


reflecta gmbh  
 Merkurstrasse 8  
 72184 Eutingen i.G.  
 Germany

mail@reflecta.de  
 www.reflecta.de

INSTALLATION MANUAL

#### 4. Adjustment

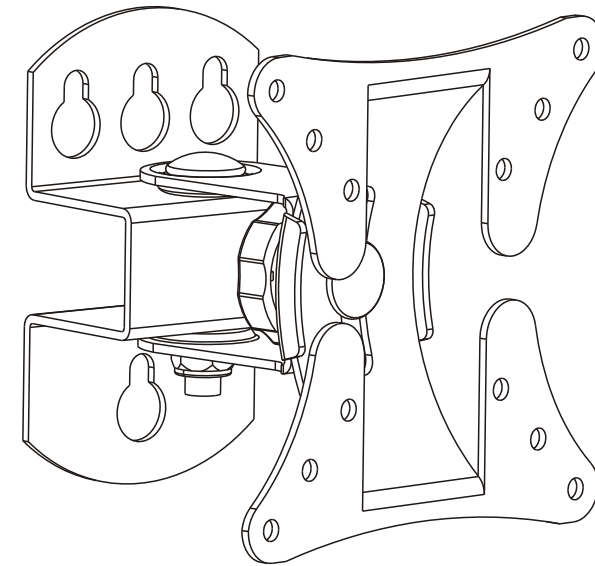


Use the tilt adjusting knob to adjust your display to the desired angle then tighten it.

#### Maintenance

- Check that the bracket is secure and safe to use at regular intervals(at least every three months).
- Please contact your dealer if you have any questions.

## Full Motion LED, LCD TV Wall Mount



**CAUTION: DO NOT EXCEED RATED LISTED WEIGHT. SERIOUS INJURY OR PROPERTY DAMAGE MAY OCCUR!**

23114



50x50  
 75x75  
 100x100

27"  
 MAX



30kg  
 (66lbs)  
 RATED

ISSUED: FEB. 2013

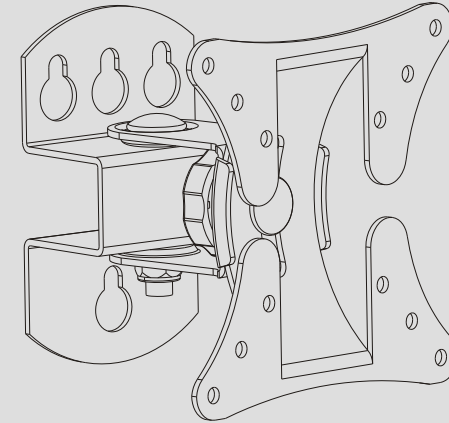
**NOTE:** Read the entire instruction manual before you start installation and assembly.

## **WARNING**

- Do not begin the installation until you have read and understood all the instructions and warnings contained in this installation sheet. If you have any questions regarding any of the instructions or warnings, please contact your local distributor.
- This mounting bracket was designed to be installed and utilised **ONLY** as specified in this manual. Improper installation of this product may cause damage or serious injury.
- This product should only be installed by someone with good mechanical ability who has basic building experience and fully understands this manual.
- Make sure that the supporting surface will safely support the combined weight of the equipment and all attached hardware and components.
- If mounting to wood wall studs, make sure that mounting screws are anchored into the center of the studs. The use of a stud finder is highly recommended.
- Always use an assistant or mechanical lifting equipment to safely lift and position the equipment.
- Tighten screws firmly, but do not over tighten. Over tightening can cause damage to the items, This greatly reduces their holding power.
- This product is intended for indoor use only. Using this product outdoors could lead to product failure and personal injury.

## **Component Checklist**

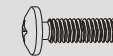
**IMPORTANT:** Ensure that you have received all parts according to the component checklist prior to installation. If any parts are missing or faulty, telephone your local distributor for a replacement.



### **Package M**



M4x14 (x4)  
M-A



M5x14 (x4)  
M-B

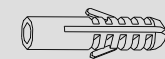


D5 washer (x4)  
M-C

### **Package W**

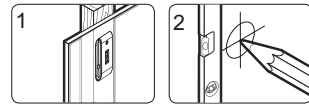
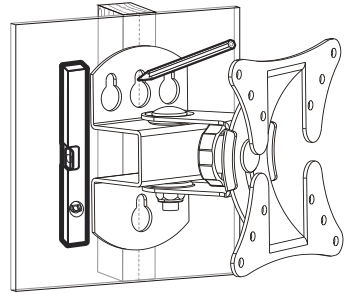
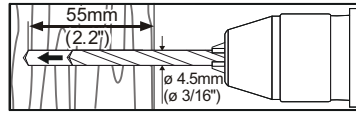
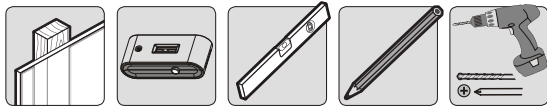


ST6.3x55 (x3)  
W-A

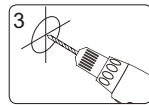


concrete anchor (x3)  
W-B

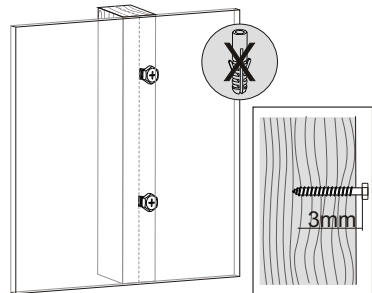
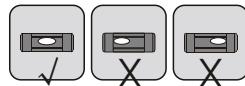
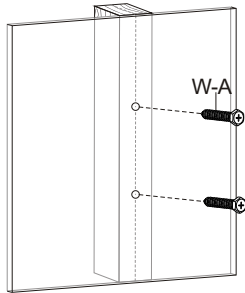
## 1a. For Wood Stud Wall Mounting



1 Find and mark the exact location of mounting holes



2 Drill pilot holes

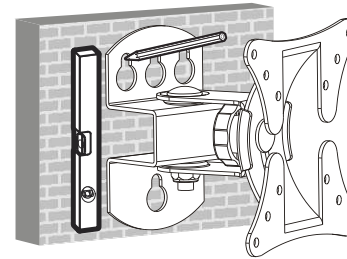
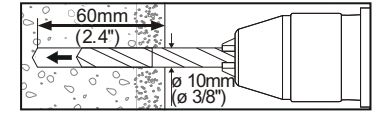
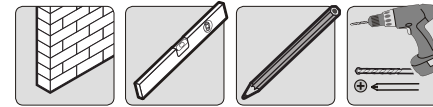


Tighten the screws leaving a 3mm space to the wall.

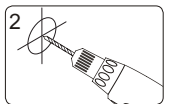
### ! WARNING

- Make sure that mounting screws are anchored into the center of the studs. The use of a stud finder is highly recommended.
- Installers are responsible to provide hardware for other types of mounting situations.
- Installers must verify that the supporting surface will safely support the combined weight of the equipment and all attached hardware and components.

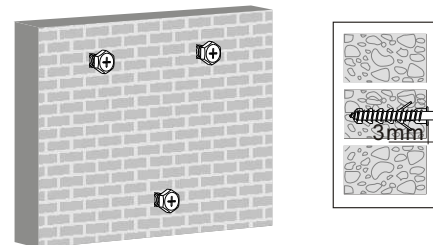
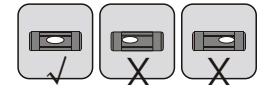
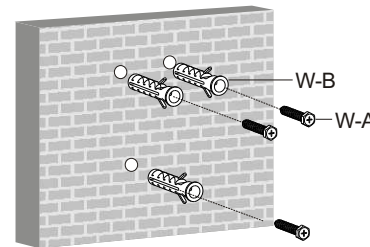
## 1b. For Solid Brick and Concrete Mounting



1 Mark the exact location of mounting holes



2 Drill pilot holes

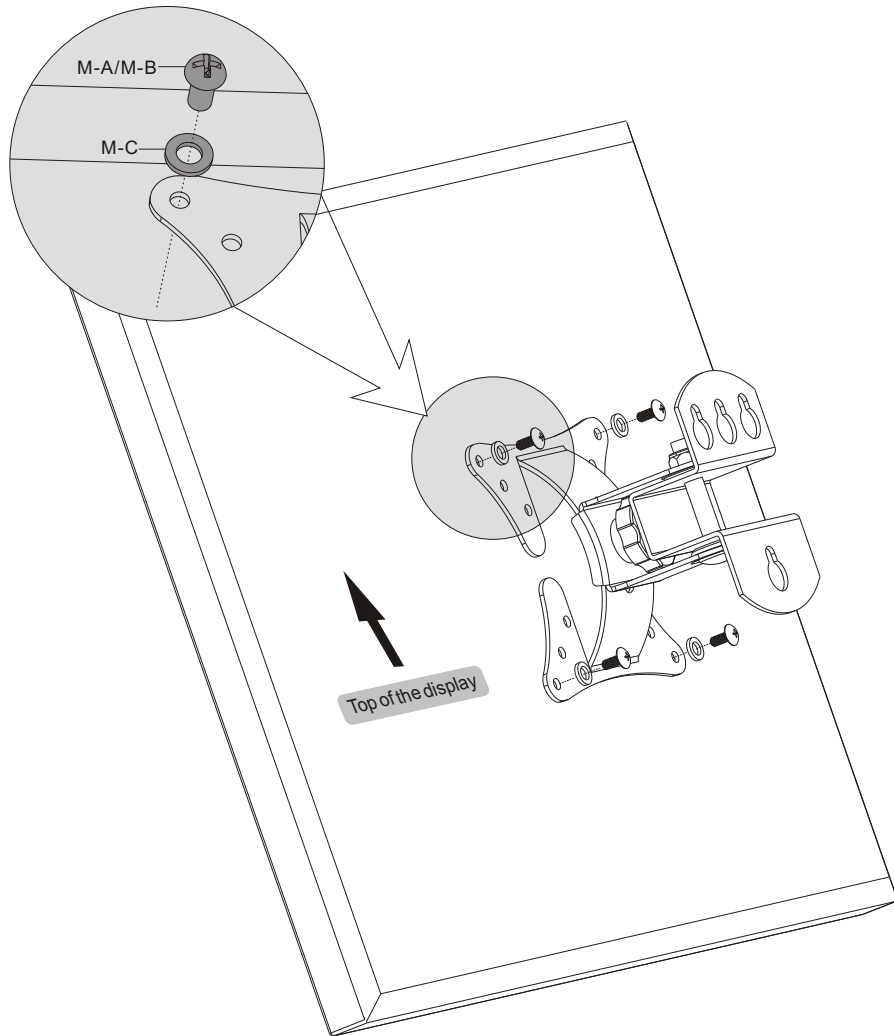
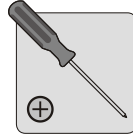
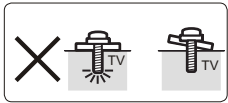
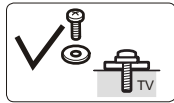


Tighten the screws leaving a 3mm space to the wall.


### ! WARNING

Installers must verify that the supporting surface will safely support the combined weight of the equipment and all attached hardware and components.

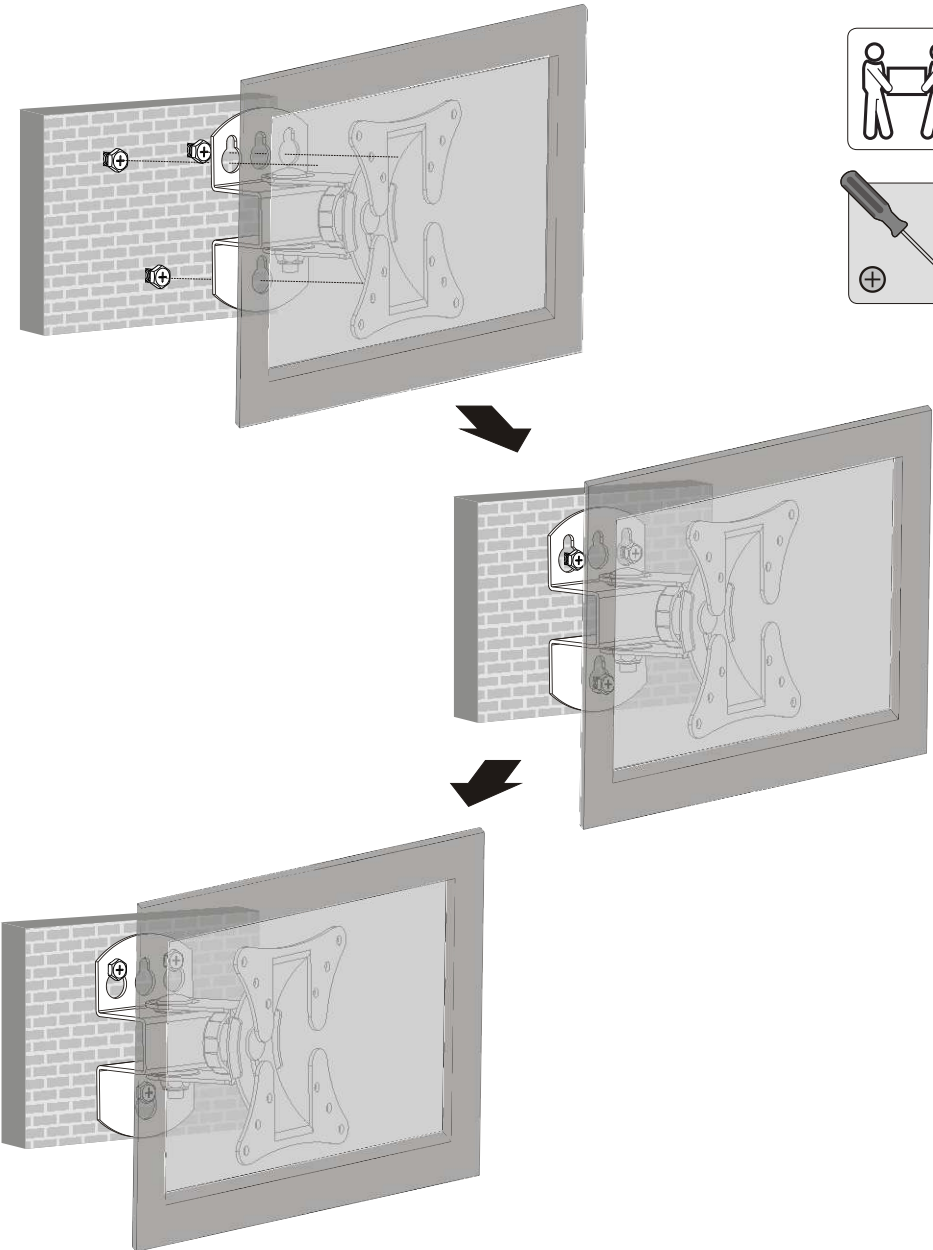
## 2. Installing the Wall Mount



Screw the wall mount onto the display.

 **Tighten all screws but do not over tighten.**

## 3. Installing the Display



- Align the holes of the wall plate to the screws in wall and lower the wall plate until the screws are seated in the upper area of tear-drop mounting holes.
- Tighten all screws for secure.